



Member CONNECT

Crane CU Scholarship Winners

We are proud to support students pursuing higher education by awarding twenty-two \$1,500 scholarships to graduating high school seniors. Recipients were selected based on their application, academics, and essay. To qualify, students had to be members for at least three months and plan to further their education full-time in the fall of 2026. Congratulations to our 2026 scholarship winners!



Statement of Financial Condition

as of 04/30/2026

Members.....67,820
 Total Loans.....\$833,602,662
 Total Shares.....\$982,534,544
 Total Assets...\$1,183,265,081

Federally Insured by NCUA.



Karina Bones

West Vigo



Grace Bredeweg

Linton



Brooklyn Carrico

Loogootee



Austin Clark

Washington



Ava Collier

Bedford North Lawrence



Brenden Cornelius

Barr Reeve



Connor Couch

Bloomington South



Esther Crane

Eastern Greene



Isabella Davenport

North



Callista Dillon

South Vigo



Mackenzie Farmer

Cloverdale



Serenity Ferguson

Owen Valley



Paige Gordon

Center Grove



Elle Johnson

North Posey



Collin Lengacher

North Daviess



Ziva Marlow

Plainfield



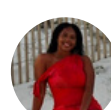
Owen Medina

Bloomfield



Olivia Nonte

Barr Reeve



Jazalyn Ward

North Posey



Lucy Wirtz

Barr Reeve



Camden Yake

Homeschooled

Congratulations to all scholarship winners!



Crane CU Family Scholarship Winner



Alton Ennis

Washington



HOLIDAY CLOSINGS

Independence Day
Saturday, July 4

Labor Day
Monday, September 7

Columbus Day
Monday, October 12

Extended Hours At West Gate

Attention members! Beginning June 15th, our West Gate location will be extending its hours to Monday through Friday from 8:30 to 4:00.

This has been a highly anticipated change, and we're excited to offer members in the area the convenience of visiting us five days a week for their financial needs. Whether you need assistance with everyday banking, opening an account, or applying for a loan, our team is here to help.

Our West Gate branch is located inside our Corporate Offices at: 1 West Gate Drive, Odon, IN

Early Pay at Crane Credit Union

Early Pay is here! As of June 1st, Crane Credit Union is now offering Early Pay to qualifying accounts. Below, you will find some commonly asked questions about the program.



How Does Early Pay Work?

When you set up a direct deposit with your employer, they send an ACH (Automated Clearing House) file to your financial institution a few days before your designated payday. The file lets the institution know who should be paid, the amount, and on what day. When Early Pay is offered, the financial institution may release funds upon receiving the ACH file instead of waiting for the designated payday.

It is very important to remember that Early Pay is not guaranteed. It all depends on the timing in which the ACH files are received. If they are not submitted until later, it can mean that your payday is only one day early or, in some cases, does not change at all. Early Pay does not provide additional funds beyond what you have earned. It's simply a convenient benefit of membership at Crane Credit Union.

What is a Qualifying Account for Early Pay?

An account with recurring payroll deposits and eligible federal benefit payments, including social security, disability benefits, and tax refunds, fall within the qualification guidelines.

Scan the QR code to read more about this program.



Member Appreciation Days

Save the date for our annual Member Appreciation Days! We're looking forward to celebrating the members who make our credit union community so special. Stop by your local branch on the dates below to enjoy refreshments, giveaways, and chances to win prizes. Whether you've been a member for years or recently joined, we hope you'll celebrate with us!

Thursday, September 10

Crane Base

Friday, September 11

Bedford
Evansville
Loogootee
Mt. Vernon
Poseyville
St. Wendel
Washington
West Gate

Friday, September 18

Bloomington
Cloverdale
Eastern Greene
Franklin
Linton
Plainfield
Spencer
Terre Haute

